



BIOTECH SUPPORT GROUP

HemoVoid™ Blood Card

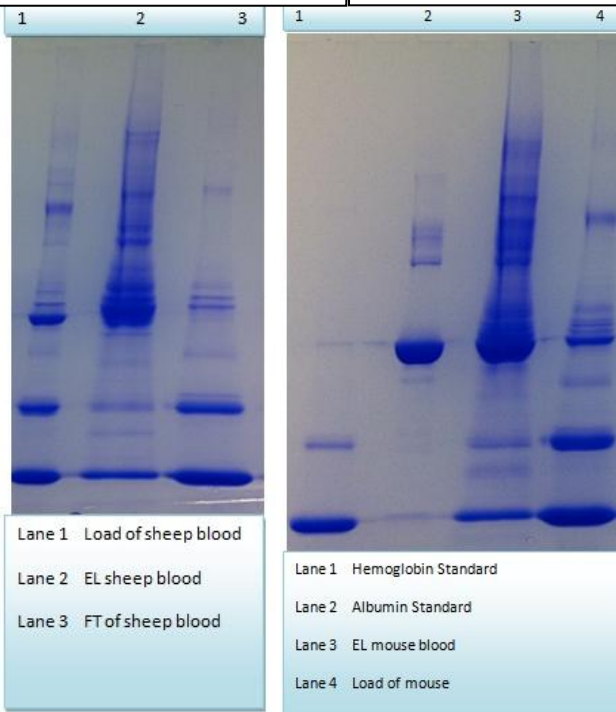
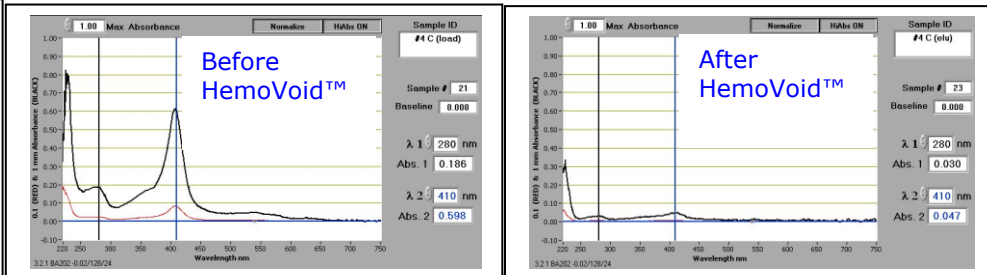
Hemoglobin Depletion And Protein Enrichment From Dried Whole Blood Cards

- Hemoglobin voids in flow-through >98%, with <30 minute bind/wash/elute protocol
- Hemoglobin removal from whole blood lysates extracted from dried blood cards
- Blood proteins and enzymes are enriched for potential biomarker and proteomic studies.
- Hemoglobin removal from frozen and fresh whole blood.
- Removes hemoglobin from diverse species incl. human, sheep, bovine, goat, rat, etc.

Hemoglobin is a common contaminant from dried whole blood cards and not normally found in serum samples. The HemoVoid™ Blood Card protocol was designed to substantially reduce the presence of hemoglobin and its associated interference with many serum protein analytes.

HemoVoid™, a silica-based mixed mode matrix, removes hemoglobin from dried whole blood card samples. The **HemoVoid™** protocol uses mild buffers; the protocol conditions are so gentle that native enzyme activity is retained in elution fractions.

Abs at 410 nm shows presence of hemoglobin. On left, proteins extracted from dried blood card show high hemoglobin concentration. On Right, after HemoVoid™ treatment, hemoglobin is severely depleted.



SDS Page (4-20%)

Sheep Blood(left)

Mouse blood (right)

Lane 1 Load of sheep blood

Lane 2 EL sheep blood

Lane 3 FT of sheep blood

Lane 1 Hemoglobin Standard

Lane 2 Albumin Standard

Lane 3 EL mouse blood

Lane 4 Load of mouse



BIOTECH SUPPORT GROUP

Product	# of samples processed	Item No.	2012 Price
HemoVoid™ Blood Card	10 Dried Whole Blood Card 0.5" Spots	HVBC-10	\$325
HemoVoid™ Blood Card	50 Dried Whole Blood Card 0.5" Spots	HVBC-50	\$1355

NOTE: Please contact sales@biotechsupportgroup.com for prices in bulk amount.

Kit Content	10 Prep	50 Prep	Reagent
HemoVoid™	0.5 gram	2.5 grams	Supplied
Protein Extraction Buffer PEB			Supplied
Binding Buffer HVBB, PH 6.0	15 ml	125 ml	Supplied
Wash Buffer HVWB, PH 7.0	15 ml	125 ml	Supplied
Elution Buffer HVEB, PH 9.8	15 ml	125 ml	Supplied
SpinX Centrifuge tube filters	10	50	Supplied
Suggested Or Equivalent Supplier of Blood Card: Whatman 903™ Protein Saver cards			Not Supplied

PROTOCOL – Based on processing 20-50 µl whole blood applied to and dried on Whatman 903™ Protein Saver cards (approximately equivalent to the imprinted 0.5" circle)

- 1. Extraction of dried protein from the card.** Punch out the dried blood section from the card into a microfuge tube. Add 400 µl PEB buffer. Shake for 30 minutes at room temperature. Microfuge at 5000 rpm for 4 minutes. Transfer the protein sample to microtube.
2. Weigh out 50 mg of **HemoVoid™** matrix into the supplied SpinX Filter.
3. Add 400 µl of **Binding Buffer HVBB** to the SpinX Filter. Vortex or mix well for 5 minutes at room temperature followed by centrifugation at 3000 rpm. Discard the supernatant.
4. Repeat step 3.
5. Add 300 µl of **Binding Buffer HVBB** to the SpinX filter. Add 300 µl of the Sample prepared in step 1 to the same SpinX filter. Vortex for 10 min and then centrifuge for 2 minutes at 5000 rpm.
6. Discard the hemoglobin containing filtrate.
7. To the pellet, add 500 µl of **Wash Buffer HVWB**. Vortex or mix well for 5 min and centrifuge for 2 minutes at 5000 rpm. Discard the filtrate.
8. Repeat Step 7.
9. To the pellet, add 200 µl of Elution Buffer HVEB. Vortex or mix well for 10 min and centrifuge for 2 minutes at 5000 rpm. Analyze the hemoglobin depleted elute protein.

CONTACT US

We welcome your questions, comments and concerns regarding our products.

Call 732-274-2866, Monday – Friday 9am-6pm EST.
Fax 732-274-2899
Email sales@biotechsupportgroup.com,



BIOTECH SUPPORT GROUP

Mail

1 Deer Park Drive, Suite P, Monmouth JCT, NJ 08852, USA